



# DIY GUIDES: HOW TO TILE



## BEFORE YOU START

With tiling, it is best if floors/walls are flat and firmly fixed. Ensure tiling surface is clean of all loose contaminating materials. Before tiling, ensure surfaces are dry and have no residue or rising damp. Prime all surfaces with CEMIX TILE BOND LATEX. Before tiling, read all packaging and data sheets which can be found on our website [www.cemix.co.nz](http://www.cemix.co.nz) to ensure the surface is prepared properly and correct for the application.

## WALL TILING



### Step One: Prime

Apply Cemix Tile Bond Latex Primer to the clean substrate.



### Step Two: Mix Adhesive

According to the product instructions, mix the tile adhesive in a bucket by adding the powder to water.



### Step Three: Spread Adhesive

Running horizontally, spread the tiling adhesive across the wall with the 6mm notched trowel.



### Step Four: Tile Application

At a right angle to the notch pattern, press and slide the tiles into place to position as wanted. Start from the bottom and work up.



### Step Five: Spacers

To ensure even spacing, use tile spacers.



### Step Six: Remove Excess Adhesive

Before the tile adhesive sets, remove any surplus adhesive in the joints.

## FLOOR TILING



### Step One: Prime

Apply Cemix Tile Bond Latex Primer to the clean substrate.



### Step Two: Mix Adhesive

According to the product instructions, mix the tile adhesive in a bucket by adding the powder to water.



### Step Three: Spread Adhesive

Using a minimum 10mm notched trowel, apply the adhesive to the floor substrate.



### Step Four: Tile Application

At a right angle to the notch pattern, press and slide the tiles in to place to position as wanted. Ideally full tiles should be at the entry to the room and cut tiles in the far side of the room.



### Step Five: Spacers

To ensure even spacing, use tile spacers.



### Step Six: Remove Excess Adhesive

Before the tile adhesive sets, remove any surplus adhesive in the joints.



Visit our Cemix Channel on  
Youtube for our 'How to Tile' videos



[WWW.CEMIX.CO.NZ](http://WWW.CEMIX.CO.NZ) | 0800 ASK CEMIX

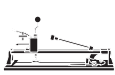


# DIY GUIDES: HOW TO CUT TILES

## CUTTING TILES



**Step One**  
Measure the tiles to be cut.



**Step Two**  
Use a combination tile cutter or platform tile cutter to cut tiles



**Step Three**  
To cut a half circle, use tile nippers to break off small pieces at a time.

CEMIX HOW TO CHOOSE THE RIGHT ADHESIVE	Cemix Super Tile Bond	Cemix Floor Tile Adhesive	Cemix Wall & Floor Tile Adhesive	Cemix Pre-mixed Paste Adhesive	Cemix Flexiset	Wall Set White Tile Adhesive	Cemix Super Rigid Set	Cemix Fast Set Tile Adhesive
Walls	●*		●	●	●	●	●*	●
Floors	●*	●	●		●	●	●	●
Internal	●*	●	●	●	●	●	●	●
External	●*	●	●		●	●	●*	●
Bathrooms, laundries & kitchens	●*	●	●		●	●	●*	●
Wet Areas	●*	●	●		●	●	●*	●
Water features & Swimming Pools		●			●	●		●
Concrete / Sand- cement screeds	●	●	●	●	●	●	●*	●
Fibre-cement sheets		●	●	●	●	●		●
Plasterboard			●	●	●			●
Painted Surfaces (adequately prepared)			●		●			●
Existing Tiles		● <sup>+</sup>	● <sup>+</sup>		● <sup>+</sup>			● <sup>+</sup>
Timber Indoor (Cement sheet overlay)			●		●	●		●

**NOTE: PRIME ALL SURFACES BEFORE TILING TO ENSURE PROPER BOND.**  
\* Add Tile Bond Latex as a complete water replacement while mixing  
+ Use Cemix Bondall Super Primer on the existing tiles to ensure bond

FOR ALL CEMIX TILING  
OPTIONS SEE THE  
TILING CHART OR  
BROCHURES. USE  
YOUR SMARTPHONE  
TO SCAN OUR QR  
CODE TO SEE MORE  
ONLINE HOW  
TO GUIDES



# WWW.CEMIX.CO.NZ

0800 ASK CEMIX | INFO@CEMIX.CO.NZ